

Crack Seal Lot West of Niles Ave as marked Engineer

Pavement Patching as marked in field by engineer

Install Concrete Collars around 3 drainage structures See Detail in Specs

Two Speed Bumps per Specifications

- GENERAL NOTES:**
1. ALL DIMENSIONS ARE FACE OF CURB TO FACE OF CURB OR BUILDING FOUNDATION UNLESS NOTED OTHERWISE.
 2. ALL ROADWAY AND PARKING LOT SIGNAGE, STRIPING, SYMBOLS, ETC. SHALL BE IN ACCORDANCE WITH LATEST JURISDICTIONAL GOVERNMENTAL ENTITY DETAILS.
 3. THE CONTRACTOR SHALL CONTACT J.U.L.I.E. (1-800-892-0123) PRIOR TO ANY WORK TO LOCATE UTILITIES AND SHALL CONTACT THE OWNER SHOULD UTILITIES APPEAR TO BE IN CONFLICT WITH THE PROPOSED IMPROVEMENT.
 4. ALL ROADWAY AND PARKING LOT IMPROVEMENTS SHALL BE COMPLETED IN ACCORDANCE WITH THE APPLICABLE SECTIONS OF THE STANDARD SPECIFICATIONS FOR ROAD AND BRIDGE CONSTRUCTION, DEPARTMENT OF TRANSPORTATION, STATE OF ILLINOIS, LATEST EDITION.
 5. INLET PROTECTION SHALL BE ADDED TO ALL STORM SEWER STRUCTURES DOWNSTREAM OF DISTURBED EARTH.
 6. PAVEMENT SLOPES THROUGH HANDICAP ACCESSIBLE PARKING AREAS SHALL BE 2.00% MAXIMUM IN ANY DIRECTION.
 7. MEET EXISTING GRADE AT SAWCUT LINES.
 8. IF ANY EXISTING STRUCTURES TO REMAIN ARE DAMAGED DURING CONSTRUCTION IT SHALL BE THE CONTRACTORS RESPONSIBILITY TO REPAIR AND/OR REPLACE THE EXISTING STRUCTURE AS NECESSARY TO RETURN IT TO EXISTING CONDITION OR BETTER.
 9. EXISTING CONDITIONS SHOWN REPRESENT THE SITE AS PREPARED BY MANHARD CONSULTING, LTD. ON JULY 21, 2014. CONTRACTOR SHALL FIELD CHECK EXISTING ELEVATIONS AND CONDITIONS PRIOR TO CONSTRUCTION AND NOTIFY ARCHITECT AND ENGINEER OF ANY DISCREPANCIES PRIOR TO STARTING CONSTRUCTION. IF THE CONTRACTOR DOES NOT ACCEPT EXISTING TOPOGRAPHY AS SHOWN ON THE PLANS, WITHOUT EXCEPTION, THEN THE CONTRACTOR SHALL SUPPLY, AT THEIR EXPENSE, A TOPOGRAPHIC SURVEY BY A REGISTERED LAND SURVEYOR TO THE OWNER FOR REVIEW.
 10. ALL STRIPING DIMENSIONS SHOWN ARE APPROXIMATE. RE-STRIPING SHALL BE COMPLETED TO PROPOSED FINISH GRADES.
 11. THE CONTRACTOR SHALL ADJUST RIM ELEVATIONS OF ALL EXISTING STRUCTURES TO PROPOSED FINISH GRADES.
 12. ALL EXISTING UTILITIES SHOWN ARE NOT TO BE INTERPRETED AS THE EXACT ELEVATION OR LOCATION, OR AS THE ONLY OBSTACLES THAT MAY OCCUR ON THE SITE. CONTRACTOR SHALL VERIFY EXISTING CONDITIONS AND PROCEED WITH CAUTION AROUND ANY ANTICIPATED FEATURES.

PAVEMENT MARKING LEGEND

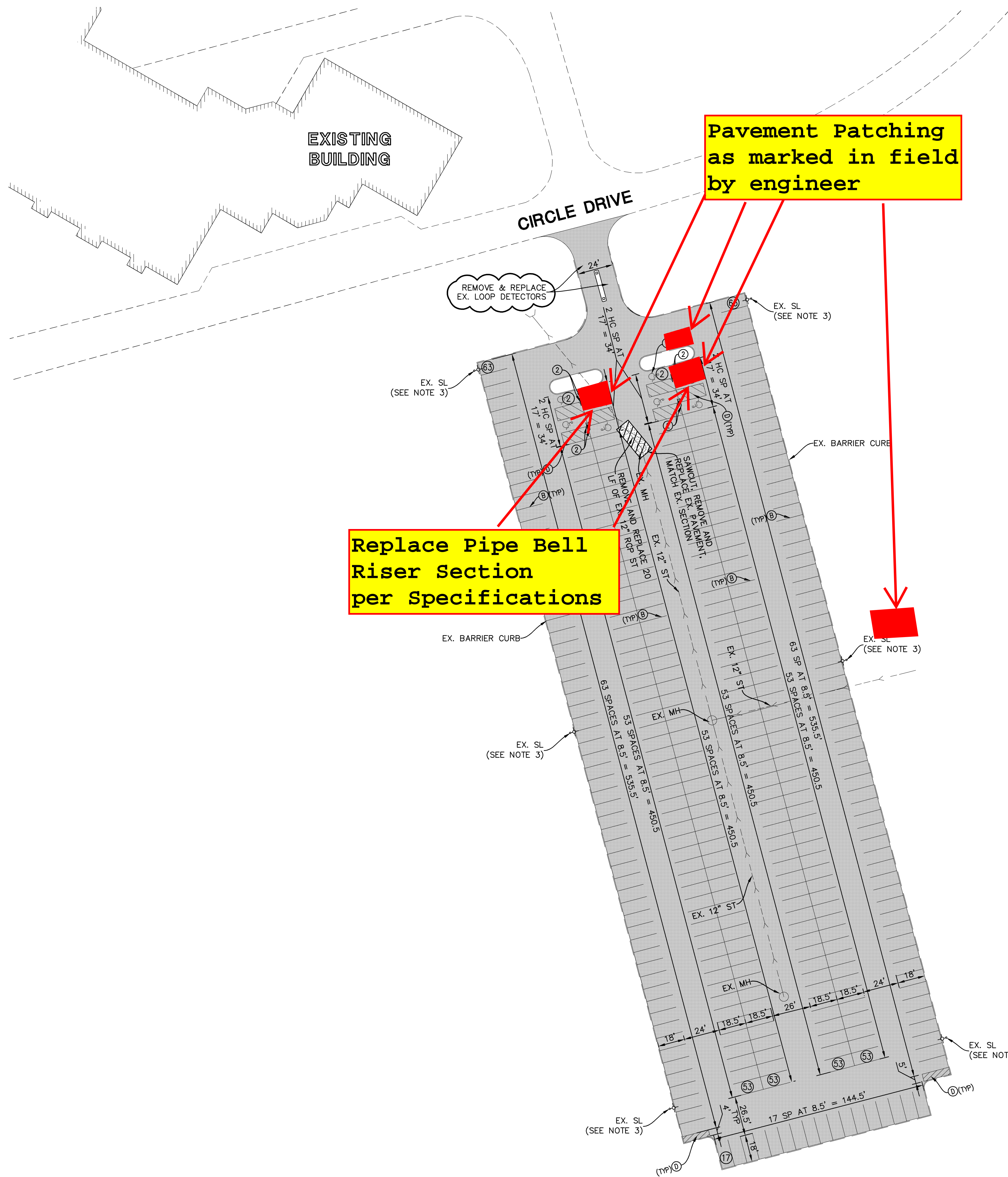
(A)	24" WHITE STOP BAR
(B)	4" YELLOW SOLID LINE
(C)	6" WHITE SOLID LINE
(D)	ACCESSIBLE PARKING SPACE PAVEMENT MARKINGS - SEE DETAIL SHEET 5
(E)	LETTERS AND SYMBOLS PAVEMENT MARKINGS - SEE DETAIL SHEET 5
(F)	4" YELLOW DIAGONAL AT 45° SPACED 2' O.C. WITH 4" YELLOW BORDER
(G)	4" YELLOW DIAGONAL AT 45° SPACED 3' O.C. WITH 4" YELLOW BORDER
(H)	PEDESTRIAN CROSSWALK WITH 6" WHITE SOLID STRIPING PERPENDICULAR TO DIRECTION OF TRAFFIC SPACED 2' O.C.

Crack Seal all 3 lots

Manhard CONSULTING LTD.
 800 Woodlawn Parkway, Vernon Hills, IL 60061 PH: 847.654.0095 FAX: 847.654.0096
 Civil Engineers • Surveyors • Water Resource Engineers • Water & Wastewater Engineers
 Construction Managers • Environmental Scientists • Landscape Architects • Planners

OAKTON COMMUNITY COLLEGE
 VILLAGE OF SKOKIE, ILLINOIS
 OVERALL SITE PLAN

March 27, 2012 - 12:36 Des Name: P:\Lesde\A\des\A\Proj\Drawings\Plan_Site\05-Site Data & Paving Plan - Lot C.dwg Updated By: mschumacher



Ordering Information

How to Construct a Catalog Number

Example: G 400HP 12 L 4 NC 6 7 8 F1

STEP 1: Luminaire	STEP 2: Housing	STEP 3: Color	STEP 4: Pole	Distributions
G 400HP	12	L 4	NC 6	F1

Catalog Number Information

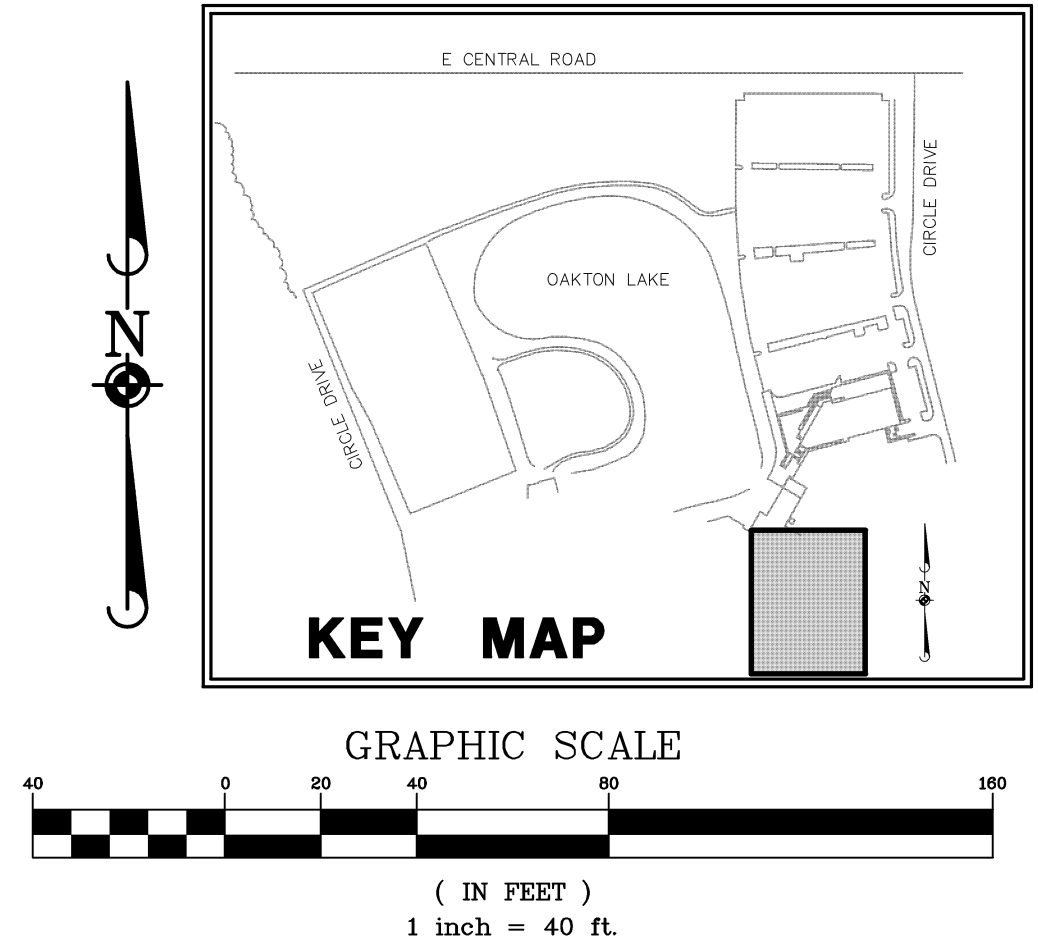
STEP 1: Luminaire: G 400HP, 12, L 4, NC 6, 7, 8, F1

STEP 2: Housing: 400HP, 12, L 4, NC 6, 7, 8, F1

STEP 3: Color: L 4, NC 6, 7, 8, F1

STEP 4: Pole: NC 6, 7, 8, F1

Distributions: F1



- SITE LIGHTING NOTES:**
- REFER TO PHOTOMETRICS PLAN PREPARED BY HOLOPHANE DATED FEBRUARY 29, 2012.
 - THE BASE BID FOR PROPOSED SITE LIGHTING IN LOT A SHALL BE HOLOPHANE 30' POLES WITH TWIN MONGOOSE FIXTURES GREEN IN COLOR. (G400PM MD L FF A N S-64321 09237-2 GN, RTA3080G P2 ND GN (AB))
 - THE BASE BID FOR PROPOSED SITE LIGHTING IN LOT C SHALL BE REPLACEMENT OF THE EXISTING FIXTURES WITH HOLOPHANE MONGOOSE FIXTURES (G400PM MD L FF A N S-64321 09237-1 GN), AND RE-PAINTING EXISTING POLES TO BE GREEN IN COLOR.

FULL DEPTH PAVEMENT PATCHING QUANTITIES

LOT	QUANTITY
LOT A	5,400 SY
LOT C	2,400 SY
LOT D	5,600 SY

- CONTRACTOR SHALL INCLUDE ALLOWANCES FOR THE PAVEMENT PATCHING QUANTITIES LISTED ABOVE.
- ACTUAL PAVEMENT QUANTITIES WILL BE FIELD VERIFIED WITH THE OWNER PRIOR TO CONSTRUCTION.
- CONTRACTOR SHALL PROVIDE A UNIT COST FOR THE PATCHING USING THE QUANTITIES ABOVE.

PARKING LOT "C" SITE DATA

STANDARD PARKING PROVIDED	355 SPACES
HANDICAP PARKING PROVIDED	8 SPACES

- PAVEMENT MARKING LEGEND**
- Ⓐ 24" WHITE STOP BAR
 - Ⓑ 4" YELLOW LINE
 - Ⓒ LETTERS AND SYMBOLS PAVEMENT MARKINGS
 - Ⓓ 4" YELLOW DIAGONAL AT 45° SPACED 2' O.C.

- SIGN LEGEND**
- ① R1-1 STOP SIGN
 - ② R7-8 HANDICAP PARKING SIGN
 - ③ SPEED LIMIT 10 MPH SIGN

- SITE DIMENSIONAL AND PAVING NOTES:**
- ALL DIMENSIONS ARE FACE OF CURB TO FACE OF CURB OR BUILDING FOUNDATION UNLESS NOTED OTHERWISE. ALL RADII DIMENSIONS ARE TO FACE OF CURB UNLESS OTHERWISE NOTED.
 - CONTRACTOR SHALL BE M3.12, UNLESS OTHERWISE NOTED.
 - MEASURED TO FACE OF CURB.
 - CONTRACTOR SHALL BE RESPONSIBLE FOR THE INSTALLATION OF SIGNAGE, STRIPING, AND PAVEMENT MARKINGS IN ACCORDANCE WITH LATEST DETAILS.

Crack Seal all lots Des Plaines Campus

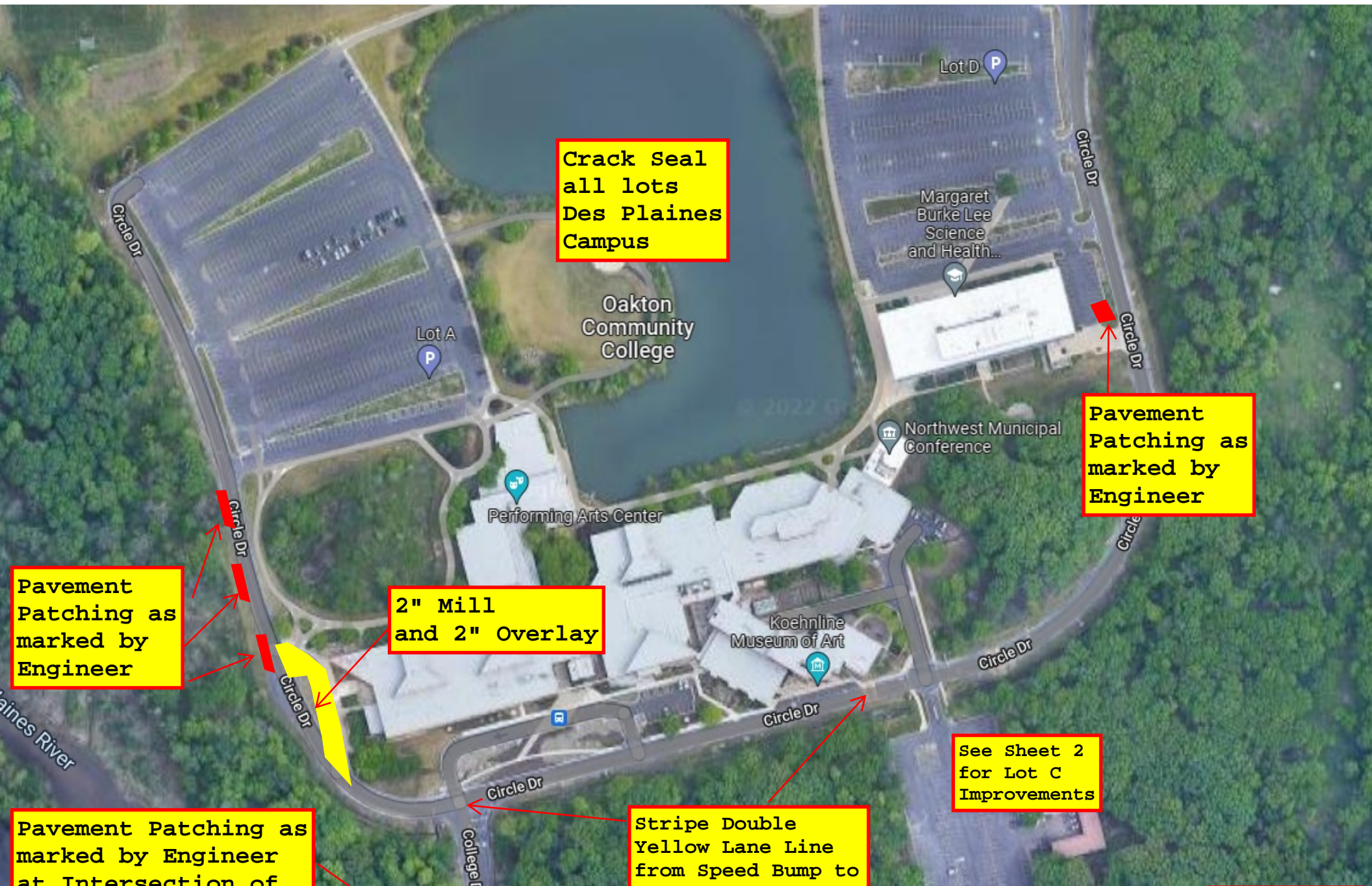
2 of 3
May 11, 2022

Manhard CONSULTING LTD.
800 Woodlawn Professional Building, Suite 200, Oakton, VA 22124
Civil Engineers • Surveyors • Water Resource Engineers • Water & Wastewater Engineers
Construction Managers • Environmental Scientists • Landscape Architects • Planners

PARKING LOT REHABILITATION - LOTS "A" AND "C"
OAKTON COMMUNITY COLLEGE, DES PLAINES
SITE DIMENSIONAL, PAVING AND LIGHTING PLAN - LOT C

DATE: _____
DRAWN BY: _____
REVISIONS: _____
MPS
MPS
MPS
03-27-12 BID ADDENDUM 1
03-16-12 REVISED PER SITE LIGHTING UPDATES
MPS

PROJ. MGR.: G.H.
PROJ. ASSOC.: F.W.
MPS



**Crack Seal
all lots
Des Plaines
Campus**

**Pavement
Patching as
marked by
Engineer**

**Pavement
Patching as
marked by
Engineer**

**2" Mill
and 2" Overlay**

**See Sheet 2
for Lot C
Improvements**

**Pavement Patching as
marked by Engineer
at Intersection of
Golf Road and
College Drive**

**Stripe Double
Yellow Lane
Line
from Speed Bump to
Intersection of
College Drive**